

Art Template for White/Paper L4

Vissually Stunning Plastic or Paper cup.

Live Area: ALL critical text or images must be within the green outline. 6.63x1.41

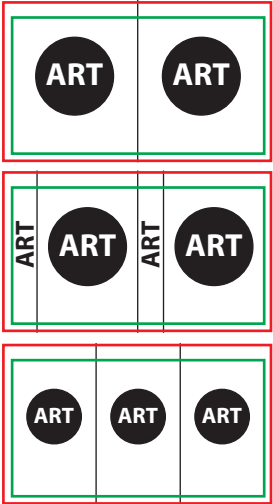
- If there is a lid on the cup;

P2 Lid: Keep critical text or images below the cyan line.

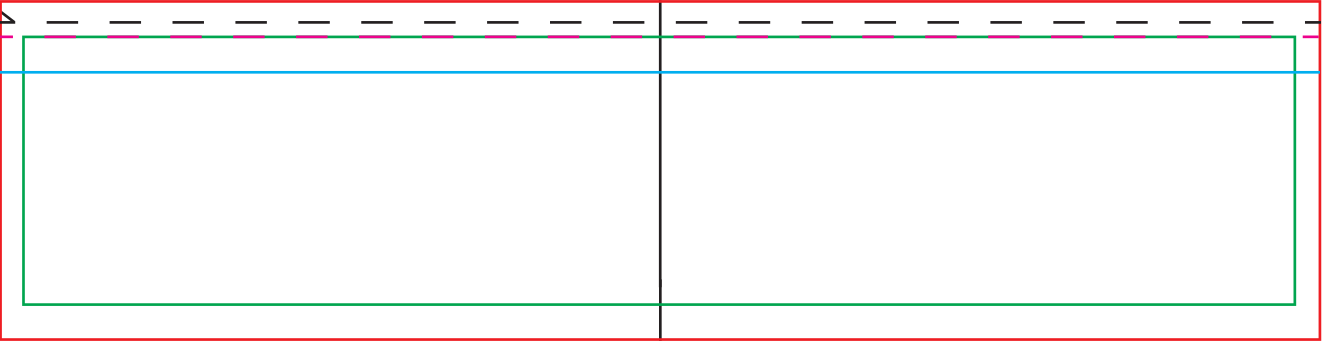
All Other Lids: Keep critical text or images below the magenta line.

Total Print Area: The red outline. For art with a full bleed, art must extend out to the red outline. 6.88x1.77

Common art layouts.



This is the cup rim line.



Center Line